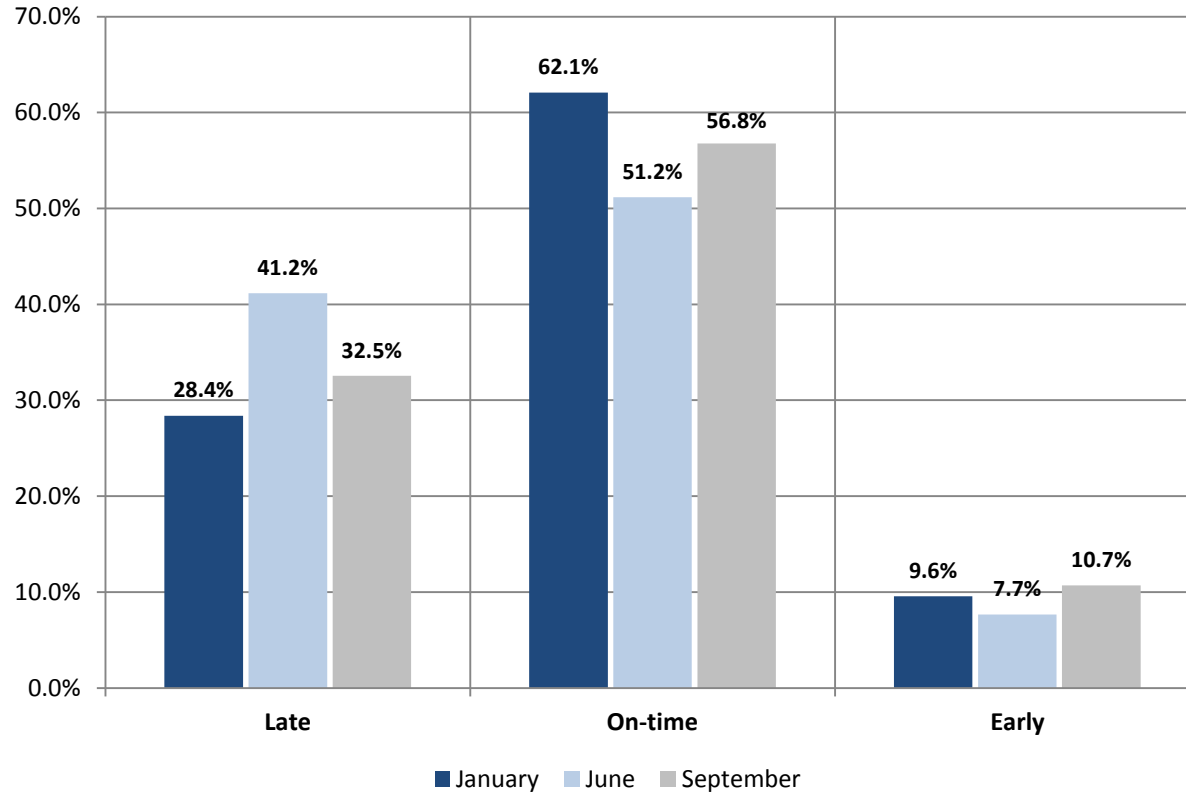


## All routes: On time Performance (%)\*

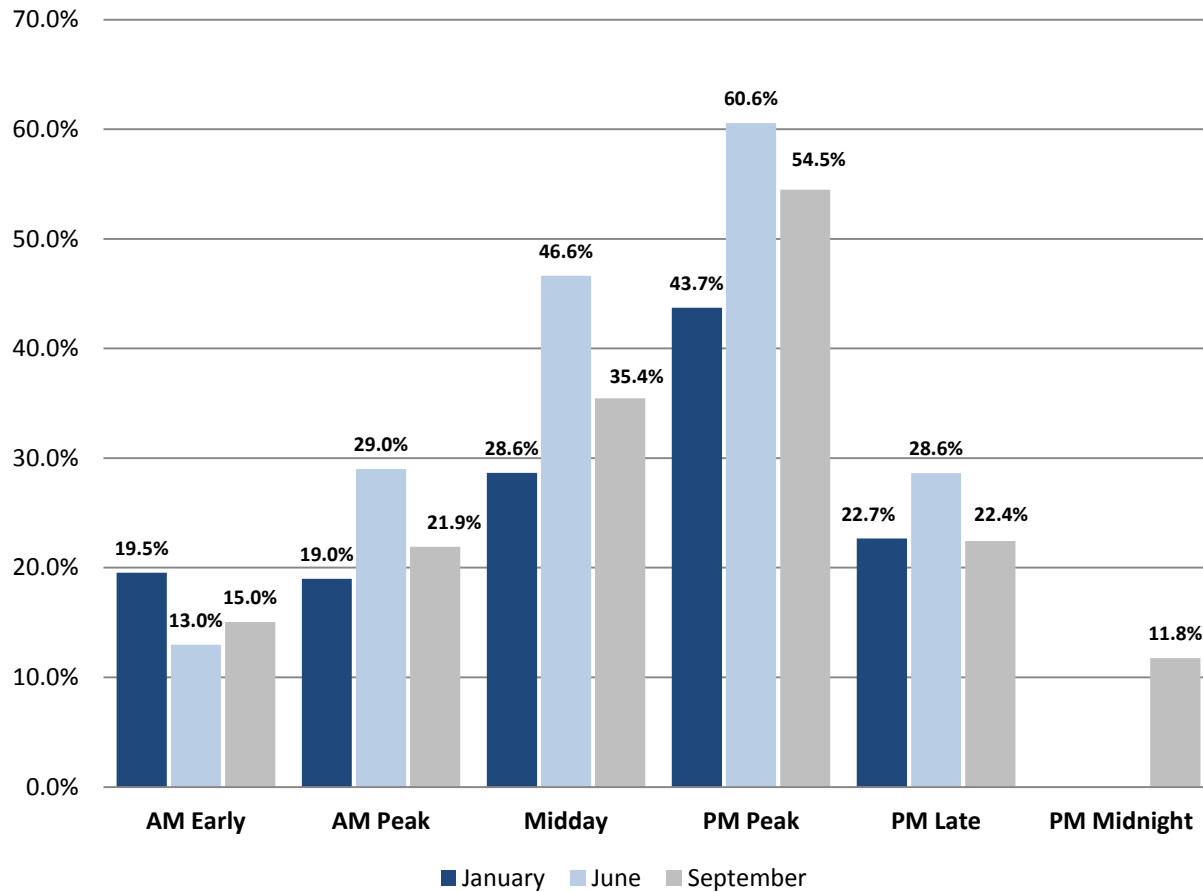


\*Late = more than 5 mins. late.  
Data source: Ridecheck Plus.

All route time points are factored into these percentages



## All Routes: Late (%) by Time Period\*

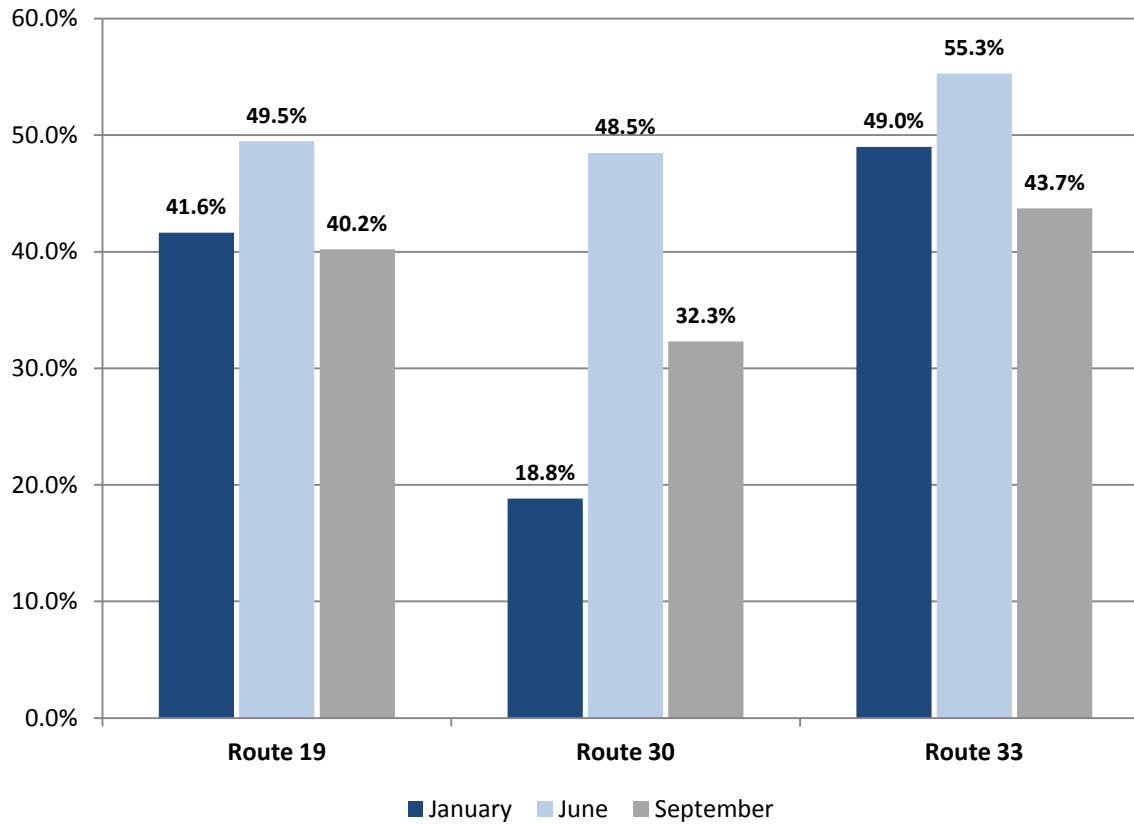


\*Late = more than 5 mins. late.  
Data source: Ridecheck Plus.

All route time points are factored into these percentages



## Routes 19, 30 and 33: Late (%)\*

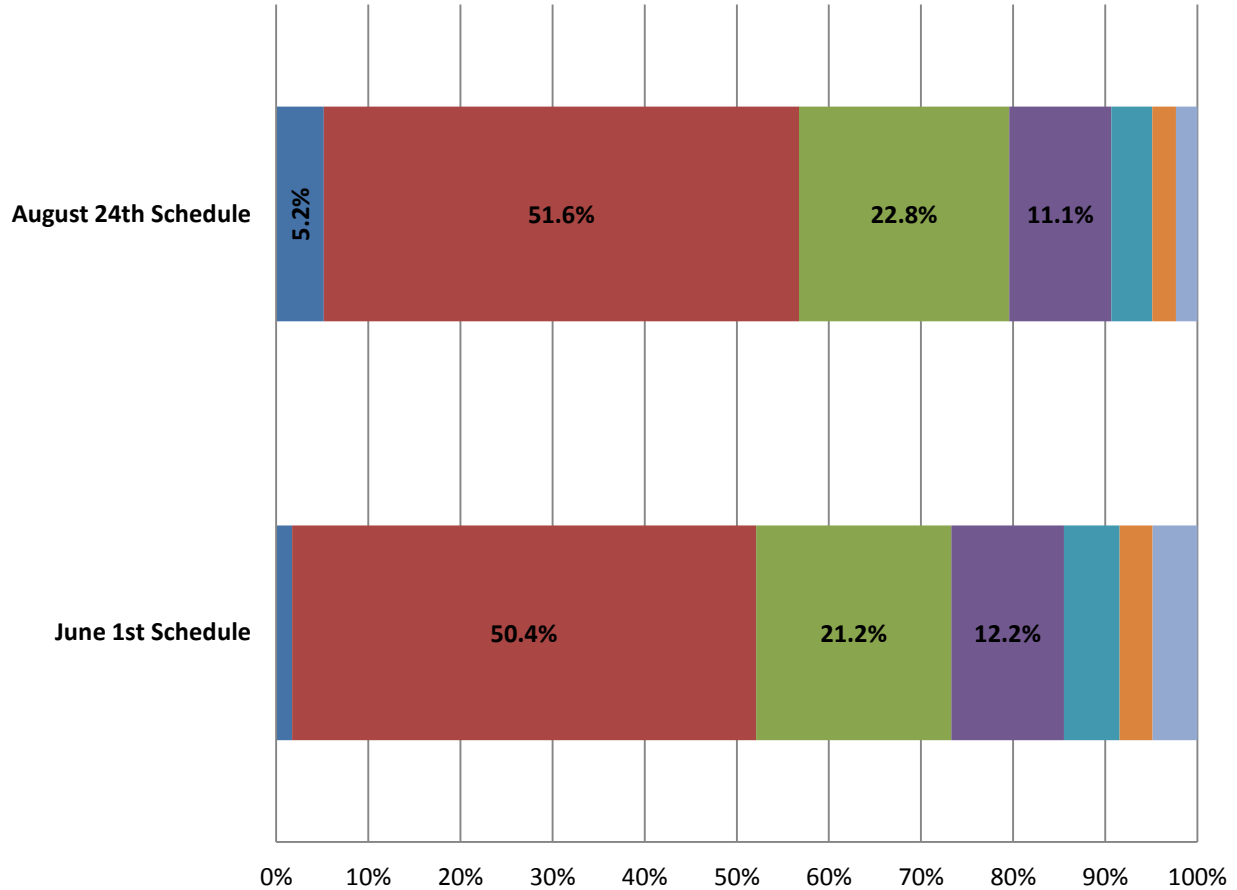


\*Late = more than 5 mins. late.  
Data source: Ridecheck Plus

All route time points are factored into these percentages

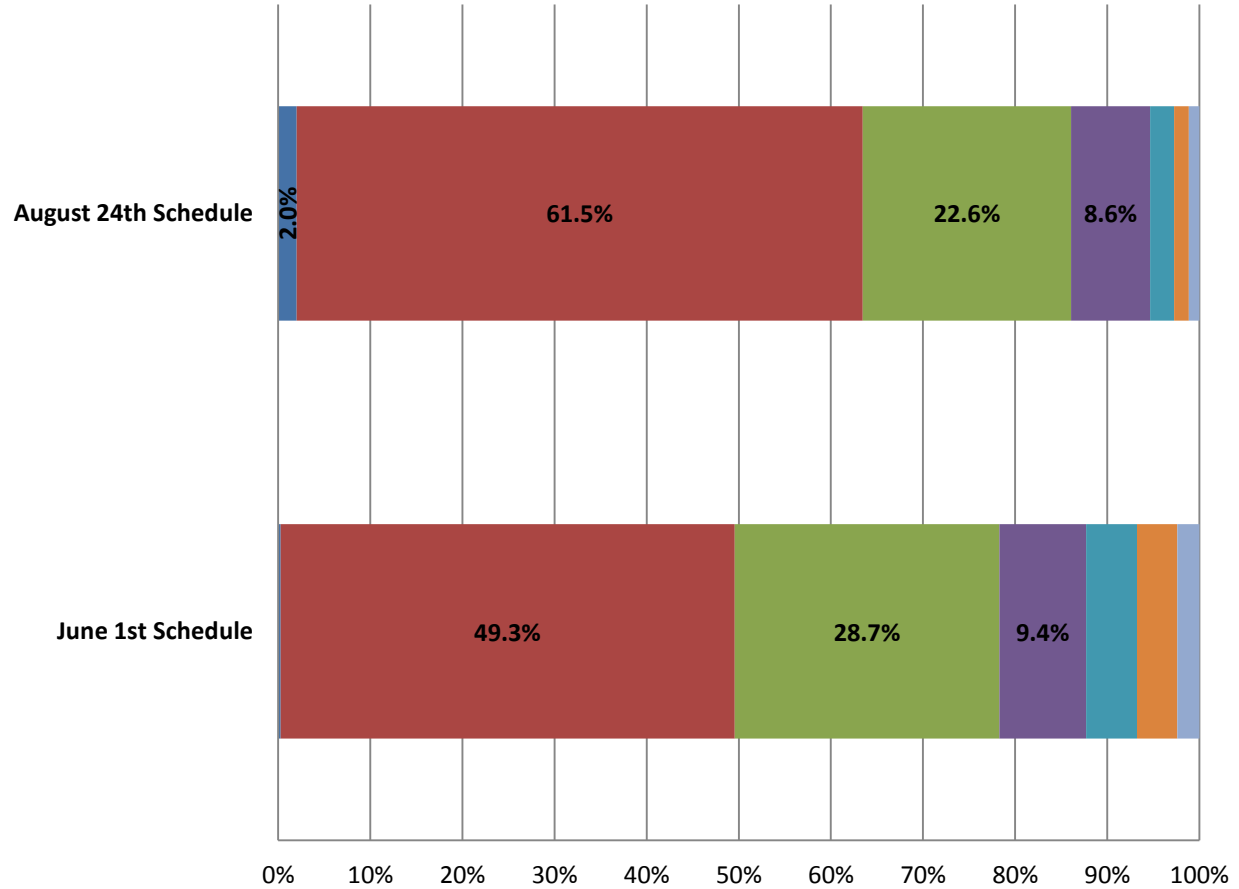


## Route 19, Adherence to Schedule



	June 1st Schedule	August 24th Schedule
■ Early trips	1.7%	5.2%
■ Trips between 0 mins. and 5 mins.	50.4%	51.6%
■ Trips late between 5 mins. and 10 mins.	21.2%	22.8%
■ Trips late between 10 mins. and 15 mins.	12.2%	11.1%
■ Trips late between 15 mins. and 20 mins.	6.1%	4.5%
■ Trips late between 20 mins. and 25 mins.	3.6%	2.6%
■ Trips late more than 25 mins.	4.9%	2.3%

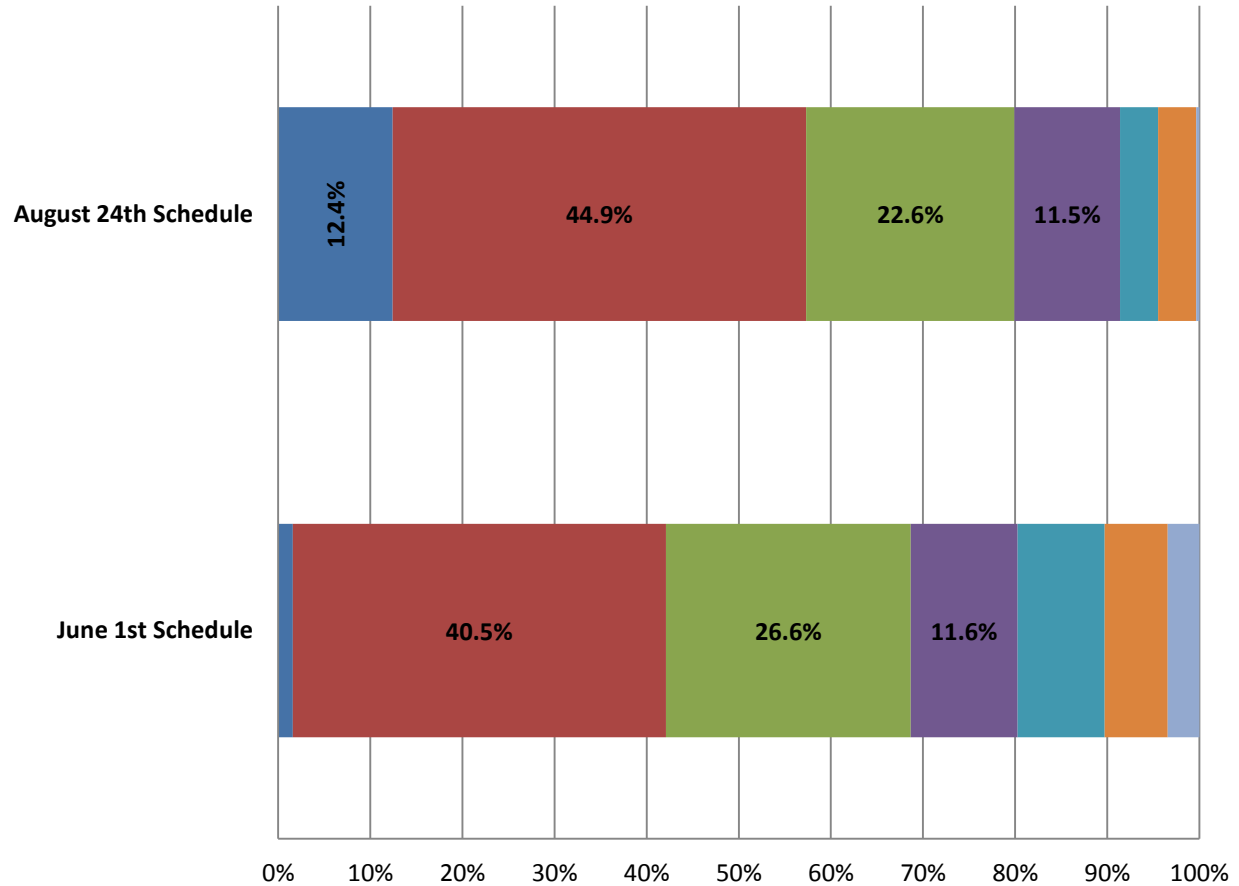
### Route 30, Adherence to Schedule



	June 1st Schedule	August 24th Schedule
■ Early trips	0.3%	2.0%
■ Trips between 0 mins. and 5 mins.	49.3%	61.5%
■ Trips late between 5 mins. and 10 mins.	28.7%	22.6%
■ Trips late between 10 mins. and 15 mins.	9.4%	8.6%
■ Trips late between 15 mins. and 20 mins.	5.5%	2.6%
■ Trips late between 20 mins. and 25 mins.	4.4%	1.6%
■ Trips late more than 25 mins.	2.4%	1.1%



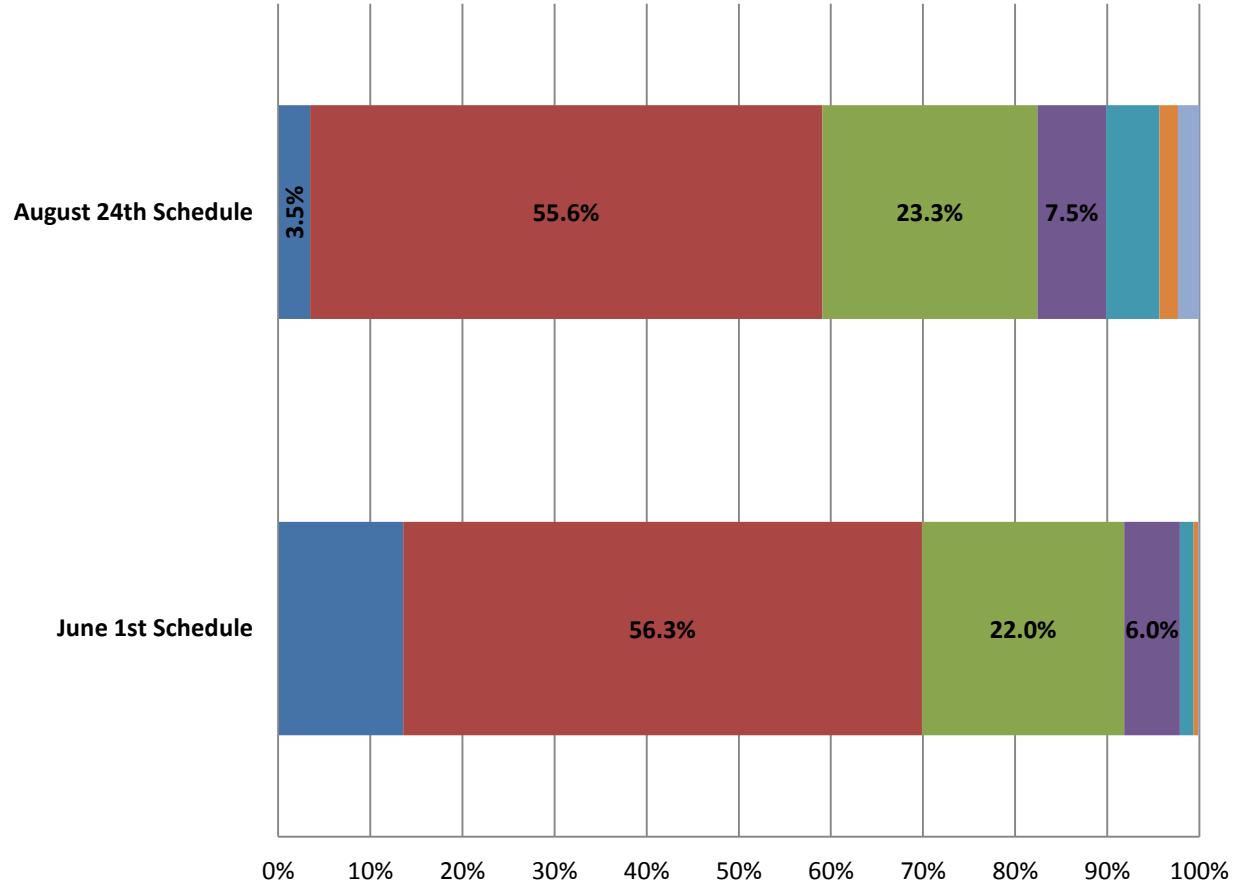
## Route 6, Adherence to Schedule



	June 1st Schedule	August 24th Schedule
■ Early trips	1.6%	12.4%
■ Trips between 0 mins. and 5 mins.	40.5%	44.9%
■ Trips late between 5 mins. and 10 mins.	26.6%	22.6%
■ Trips late between 10 mins. and 15 mins.	11.6%	11.5%
■ Trips late between 15 mins. and 20 mins.	9.5%	4.1%
■ Trips late between 20 mins. and 25 mins.	6.8%	4.1%
■ Trips late more than 25 mins.	3.4%	0.3%



## Route 2, Adherence to Schedule



	June 1st Schedule	August 24th Schedule
■ Early trips	13.6%	3.5%
■ Trips between 0 mins. and 5 mins.	56.3%	55.6%
■ Trips late between 5 mins. and 10 mins.	22.0%	23.3%
■ Trips late between 10 mins. and 15 mins.	6.0%	7.5%
■ Trips late between 15 mins. and 20 mins.	1.5%	5.8%
■ Trips late between 20 mins. and 25 mins.	0.5%	2.0%
■ Trips late more than 25 mins.	0.1%	2.3%

## **WEEKDAY**

### **Route 2**

- Increase running times; 30 to 35 minutes; between 2:45pm and 6:00pm.
- No change in number of trips per day.
- Total span of service will increase from 9:15pm to 9:35pm.
- Outbound trips between 2:45pm and 6:00pm will use upper Pleasant St from Tatnuck Square. Mower St on outbound trips BY REQUEST.

### **Route 3**

- Running times stay at 25 minutes.
- Trips between 3:00pm and 9:05pm will change by 10 minutes (due to interline connection with Route 30) to the following times outbound Hub times: *3:50pm, 4:50pm, 6:00pm, 7:00pm and 8:00pm.*
- Between 9:20pm and 11:35pm running times will return to 15 minutes
- No change in number of trips per day



## Route 6

- Trips between 3:00pm and 9:05pm will change by 10 minutes (due to interline connection with Route 30) to the following times outbound Hub times: *3:15pm, 4:20pm, 5:25pm, 6:30pm, 7:30pm and 8:25pm.*
- Runs per day will change from 30 (15 in/15 out) to 29 (14 in/15 out)
- Same span of service (6:10am-8:50pm)

## Route 7

- Between 12:45pm and 6:35pm run time will increase from 30 to 35 min.
- The 6:35pm and 7:05 pm trips will run on a 30 minute headway and between 7:35pm and 11:35pm, running times will return to 25 minutes
- These changes will affect the total number of trips operated on Route 7 per day. Total number of runs per day will change from 65 (33 in/32 out) to 61 (31 in/30 out)
- Total Span of service operations will decrease 15 min in the early morning and 10 min in the late evening

## **Route 14**

- Time point changed from “Burncoat and Clark” to “Burncoat High School”
- Schedule time adjusted for new time point at Burncoat High School

## **Route 19**

- Running times increased from 30 to 35 minutes between 2:30pm & 6:50pm.
- Total number of runs per day will change from 75 (38 in/37 out) to 73 (37 in/36 out)
- Scheduled trips to Goddard Memorial Drive and Coppage Drives will be limited. Most trips to this location will be made BY REQUEST

## **Route 22**

- Start time for the first trip of the day moved ten minutes earlier to coordinate connection with MBTA commuter rail at Hub.

## Route 23

- Schedule times between 3:30pm & 12:05am will change by 10 minutes (due to interline connection with Route 19) to the following times outbound Hub times: *3:40pm, 4:10pm, 4:40pm, 5:10pm, 5:50pm, 6:20pm, 6:50pm, 7:20pm, 8:20pm, 8:50pm, 9:05pm, 10:05pm, 11:05pm and 11:35pm.*
- New 11:05pm run will short-turn at Brittan Square
- Number of runs per day will change from 64 (29 in/35 out) to 62 (27 in/35 out)
- Afternoon Lincoln Plaza trip times changed with a loss of 1 trip in and 1 trip out

## Route 25

- Schedule times will change between 11:30am and 8:50pm (due to interline connection with Route 31) to the following times outbound Hub times: *11:30am, 12:35pm, 1:40pm, 2:45pm, 3:50pm, 4:55pm, 6:00pm, 7:05pm and 8:00pm.*
- Total span of service operations will extend 40 mins later

## **Route 26**

- Late night service change due to changes on Routes 19 and 23. New inbound run times from the Great Brook Valley Community Center will be: *8:35pm, 9:35pm and 10:35pm.*
- An additional late night inbound trip will start at Brittan Square at 11:15pm.

## **Route 30**

- Running times increased from 35 min to 40 min between 2:30pm & 6:30pm.
- Running times for 6:55pm inbound will be 35 minutes
- Between 7:20pm and 9:10pm, running times will be 30 minutes each way.
- Number of runs per day will change from 68 (34 in/34 out) to 67 (34 in/33 out)
- Span of service changed slightly; will operate from 5:40am-12:00am

## **Route 31**

- Running times between 10:50am and 6:50pm will increase from 35 to 40 min
- Between 6:50pm and 8:00pm running times will return to 35 minutes
- Number of runs per day will change from 31 (34 in/34 out) to 29 (15 in/14 out)
- Service will end 50 min early at 8:00pm.



## **Route 33**

- All scheduled times adjusted. First three trips of the day start ten minutes earlier and running times between 11:00am-5:10pm to Spencer DPW will be 60 minutes each way.
- Number of runs per day will change from 29 (14 in/15 out) to 28 (14 in/14 out)
- Span of service operations will change from 5:00am-8:27pm times to 4:50am-8:45pm.

## **SUNDAY**

### **Route 26**

- Schedule times will begin 30 minutes earlier to coordinate with Route 23 on Lincoln Street.

